



DINH VU PORT

PROCEDURE FOR VERIFIED GROSS MASS(VGM) OF OUTBOUND CONTAINER AT DINH VU PORT

Pursuant to the International Convention for the Safety of Life at Sea (SOLAS) 1974, as amended, requires in chapter VI, part A, regulation 2 that packed containers' gross mass are verified prior to stowage aboard ship

Pursuant to the MSC.1/Circ.1475 by the International Maritime Organisation (IMO) on Guidelines regarding the verified gross mass of a container carrying cargo

The shipper shall be responsible for the verification of the gross mass of a container carrying cargo (hereinafter "a packed container"). The shipper shall be also responsible for ensuring that the verified gross mass is communicated in the shipping documents sufficiently in advance to be used by the ship's master or his representative and the terminal representative in the preparation of the ship stowage plan.

In the absence of the shipper providing the verified gross mass of the packed container, the container shall not be loaded on to the ship unless the master or his representative and the terminal representative have obtained the verified gross mass through other means.

The verification of the gross mass can be achieved by either of two methods:

1. Weighing the packed container; or
2. Weighing all packages and cargo items, including the mass of pallets, dunnage and other packing and securing materials to be packed in the container, and adding the tare mass of the container.

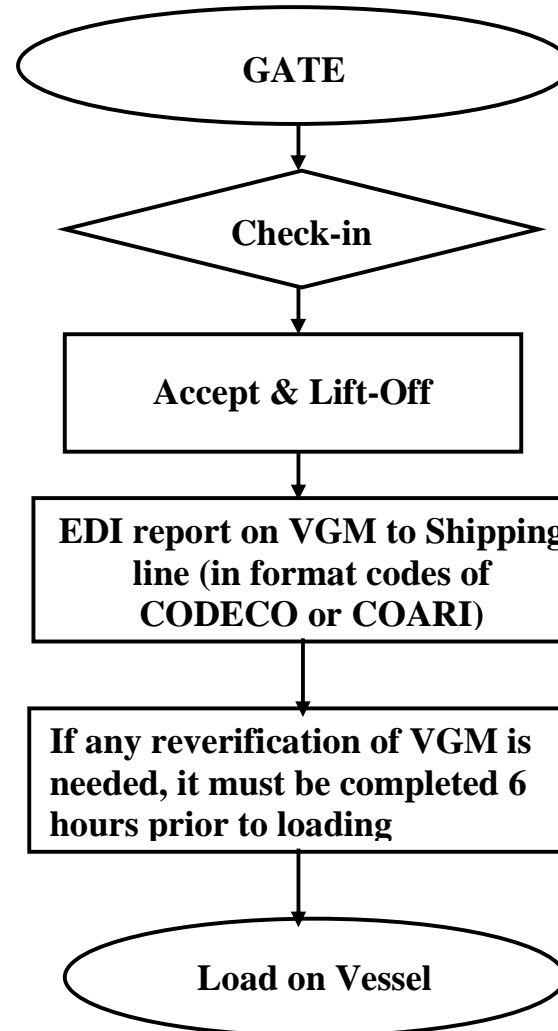
Procedure for verified gross mass (VGM) of outbound container will be applied at Dinh Vu Port from 1st July 2016 according to following procedure.



DINH VU PORT

**PROCEDURE FOR VERIFIED GROSS MASS(VGM) OF OUTBOUND CONTAINER
AT DINH VU PORT**

1. CONTAINER WITH VGM

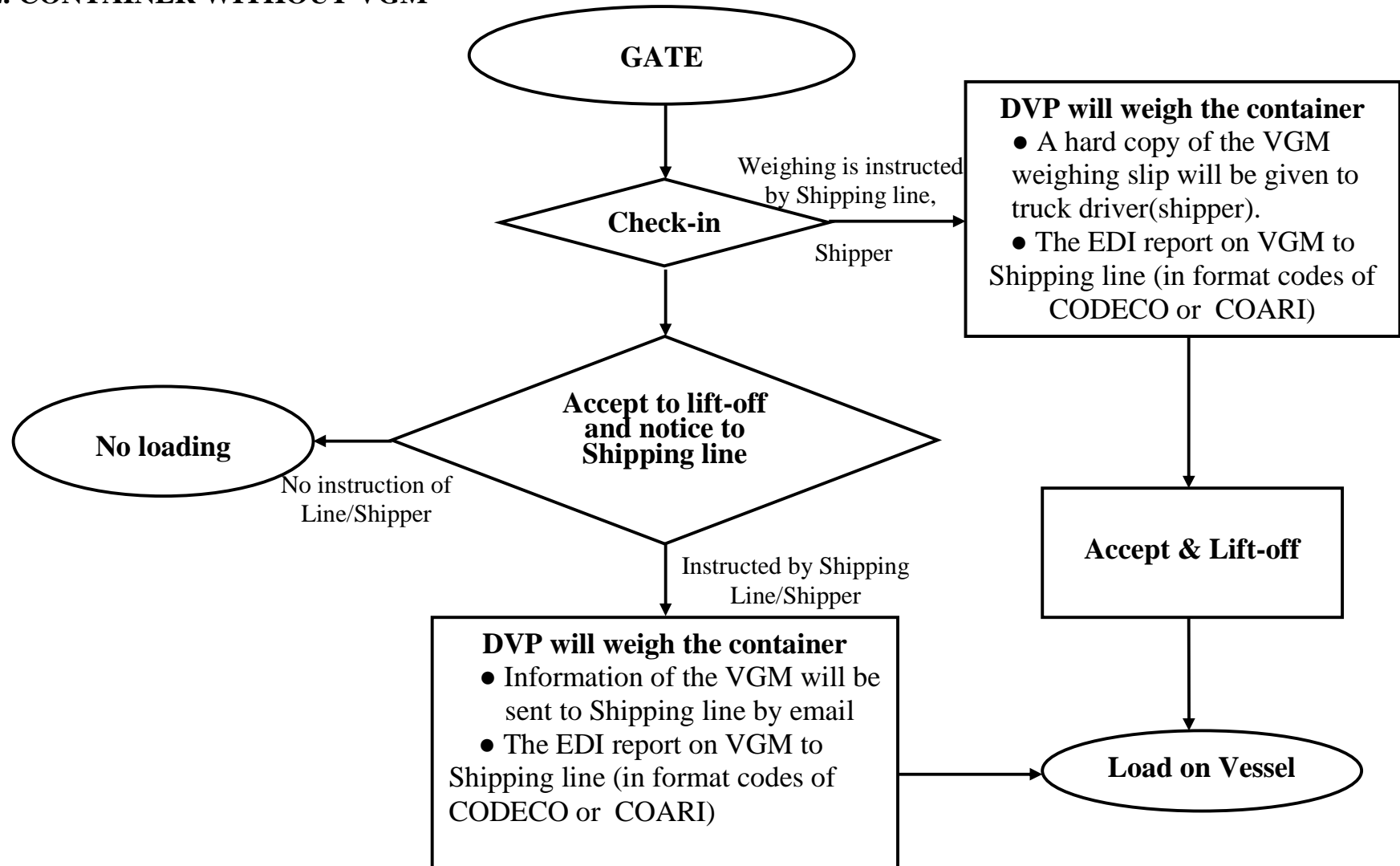




DINH VU PORT

PROCEDURE FOR VERIFIED GROSS MASS(VGM) OF OUTBOUND CONTAINER AT DINH VU PORT

2. CONTAINER WITHOUT VGM





DINH VU PORT

PROCEDURE FOR VERIFIED GROSS MASS(VGM) OF OUTBOUND CONTAINER AT DINH VU PORT

3. METHODS OF VGM DECLARATION AT DINHVU PORT (Shipping line or its representative)

- VGM declaration by hard copy
- VGM declaration shall be sent to port by email
- Any VGM amendments must be carried out at least six (06) hours prior to loading
- VGM certified by shipmaster of all loaded containers must be sent to port after loading is completed.

4. INFORMATION OF VGM DECLARATION

- Container Number
- Booking Number
- Verified Gross Weight
- Name of person/entity who declares VGM

5. IN CASE, CONTAINERS TO BE STUFFED AT PORT, TO BE LIFTED OFF FROM BARGE

- Applied as container without VGM: DVP will weigh the container if instructed by Shipping line or at request/order of Shipper, no loading on ship without VGM



DINH VU PORT

**PROCEDURE FOR VERIFIED GROSS MASS(VGM) OF OUTBOUND CONTAINER
AT DINH VU PORT**

**6. IN CASE OF SHIPSIDE LOADED CONTAINERS (*CONTAINERS TO BE DIRECTLY LOADED ON VESSEL
FROM OUTSIDE DEPOTS*)**

- VGM declaration must be sent to DINHVU PORT operations department by Shipping line's representative at least six (06) hours before commencement of loading by email or hard copy.